



**KEEP**

### Follow directions from Emergency Services

Make sure you have access to emergency information.

FOR HELP IN FLOODS AND STORMS CALL

**132 500**



**CALL**

For general information during business hours **13 22 81**



**FOLLOW**

[@ACT\\_ESA](#) [@actemergencyservicesagency](#)



**VISIT**

[esa.act.gov.au](http://esa.act.gov.au)



**DOWNLOAD**

BOM app



**LISTEN**

Local radio

**IN AN EMERGENCY CALL TRIPLE-ZERO**

**000**

### How can the ACTSES help?

The ACT State Emergency Service (ACTSES) is responsible for responding to storms in the ACT. This includes planning for storms and educating the community on how to protect themselves and their property.

**The ACTSES can:**

- give safety advice
- place tarps on damaged roofs
- remove fallen trees and branches from buildings, roads or property

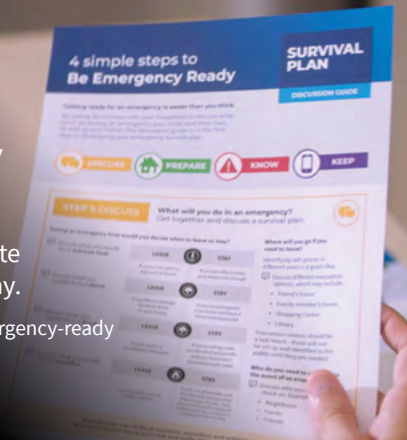


ACTSES volunteers can provide temporary repairs and relief to damaged property, but you will need to engage professional tradespeople to carry out permanent repairs.

### Are you Emergency Ready?

Download and complete your survival plan today.

Visit [esa.act.gov.au/be-emergency-ready](http://esa.act.gov.au/be-emergency-ready)



**Be Emergency Ready**

For more advice on floods and storms visit [esa.act.gov.au/be-emergency-ready](http://esa.act.gov.au/be-emergency-ready)



**ACT EMERGENCY SERVICES AGENCY**

# Be Storm Ready



Storms can happen anywhere, at any time of the year. It is important to stay prepared all year round.



FOR HELP IN FLOODS AND STORMS CALL

**132 500**

# Are you Storm Ready?

The ACT State Emergency Service (ACTSES) encourages the community to take simple steps to be prepared for a storm or major weather event.

## Are you at risk?

During storms, it is important to protect your family and property from the impacts of damaging winds, hail and heavy rainfall (flash flooding).

**Damaging winds** can bring down trees, branches, powerlines, remove roofs and blow around outdoor items.

**Hail** can injure people and damage property.

**Heavy rainfall** and rising water levels can:

- damage homes and belongings
- rise rapidly, flooding homes, property and roads
- drain rapidly making floodwater, drains and other water courses a safety hazard

## Does your Home Emergency Kit include these items?



Survival Plan



Portable radio



Torch with spare batteries



First Aid kit and medications



Copies of important documents



Food and water



## DISCUSS

### Create a Survival Plan for your household

Download the Survival Plan Discussion Guide at [esa.act.gov.au](http://esa.act.gov.au)



#### RESEARCH YOUR AREA

Find out if you are in a flood prone area.

📍 **Find out at** [esa.act.gov.au/flood-prone-areas](http://esa.act.gov.au/flood-prone-areas)



#### MAINTAIN YOUR HOME

Discuss who is responsible for home maintenance that could minimise storm damage.



#### PLAN FOR EVACUATION

Discuss where you would go and how you would travel there.



## PREPARE

### Take action to make your home safer

Download and complete your Survival Plan at [esa.act.gov.au](http://esa.act.gov.au)



#### TRIM TREES

This will keep them from falling on your home.



#### CLEAR GUTTERS

This will decrease the likelihood of water damage.



#### REMOVE AND SECURE

Secure loose items around your home that could cause damage in strong winds.



#### LEARN THE SIGNS

Learn the signs of an approaching storm and potential flash flooding in your local area.



#### INSURANCE

Keep your home and car insurance up-to-date.



## KNOW

### Know how to stay safe during a storm

Follow your plan and be prepared to evacuate your home if advised to do so.



#### STAY INDOORS

Keep your family and your pets indoors and stay clear of windows.



#### PARK SAFE

Park your car under secure cover, away from trees, powerlines and drains.



#### STAY CLEAR

Stay clear of fallen trees or powerlines and damaged buildings.



#### UNPLUG

Unplug and avoid using electrical equipment or devices that are connected to mains power, such as landline phones, chargers or modems.



#### DRIVE SAFE

If driving, put on your hazard lights and pull over to the side of the road. Keep clear of floodwaters, trees and powerlines.



### If it's flooded, forget it!

Never walk, ride or drive through floodwaters. Stay clear of creeks, streams, drains and causeways.

